



APFC148 : With 3 CT sensing
Size : 144 x 144mm



APFC147 : With 1 CT sensing
Size : 144 x 144mm



APFC347 : With 1 CT sensing
Size : 96 x 96mm

New

FEATURES	<ul style="list-style-type: none"> • With Built In Multifunction Meter • Dual Colour Backlight for Alarm Indication • Auto Detection of Capacitor Bank Values • Configurable Alarm Settings • Dual Password Protection • RS485 Communication MODBUS RTU Protocol *(Only for 12 stage variant) 	<ul style="list-style-type: none"> • Auto Detection of Capacitor Bank Values • Configurable Alarm Settings • Dual Password Protection 	<ul style="list-style-type: none"> • Auto Detection of Capacitor Bank Values • Configurable Alarm Settings • Dual Password Protection
DISPLAY	LCD with Dual Colour Backlight		7 segment LED
DIGITS	3 Rows, 4 Digits to show electrical parameters		1 Row, 4 Digits to show Power Factor
ELECTRICAL CONNECTION	3Ø - 4W, 3Ø - 3W, 2Ø - 2W, 1Ø - 2W		2Ø - 2W, 1Ø - 2W
RATED INPUT VOLTAGE	11 to 300V AC (L-N), 50 to 520V AC (L-L)		40 to 300V AC (L-N), 50 to 530V AC (L-L)
RATED INPUT CURRENT	Nominal 5A AC (min : 11mA ; max : 6A)		Nominal 5A AC (min : 50mA ; max : 6A)
POWER CONSUMPTION	15VA max		7VA max.
FREQUENCY	45 to 65Hz		
MEASUREMENT RANGE	Power Factor : 0.8 Lag to 0.8 Lead		
ALARM SETTINGS	Over / Under Voltage, Over / Under Compensation, CT Polarity Error, THDI error, Step Error, Over Temperature, Fan Setting, No voltage	Over / Under Voltage, Over / Under Compensation, CT Polarity Error, Current Absent Indication	
PHASE COMPENSATION	0°, 90°, 120°, 210°, 240°, 330°		
ACCURACY	Power Factor : ± 0.01, Voltage (L-N/L-L), Current : ±0.5% of full scale, Frequency : For L-N >20V, For L-L >35V : ±0.1% of full scale, Power (kW, kVA, kVAh) : 1%, Energy (kWh, kVAh, kVAh) : Class 1 Temperature : ±3°C of full scale	Power Factor : ±0.01	
CT PRIMARY	1 / 5A to 9999A (Programmable for any value)		
CT SECONDARY	1 or 5 A (Programmable)		
PT PRIMARY	100V to 500kV (Programmable for any value)	--	
PT SECONDARY	100 to 500V (Programmable for any value)	--	
STEPS	1 to 8 / 12 / 14* *(FAN & ALARM output can be used as 13 th & 14 th step)	3 to 8/12	3 to 8
RELAY CONTACT	5A @ 250V AC		
SWITCHING PROGRAM	Automatic / Linear / Rotational		
STEP TIME	1 to 999s		
DISCHARGE TIME	1 to 9999s	1 to 999s	
CONTROL MODE	Automatic / Manual		
CONTROL SENSITIVITY	55 to 100%		
AUTO INITIALIZATION	Yes / No		
COMMUNICATION	RS485 Communication MODBUS RTU Protocol *(Only for 12 stage variant)	--	
SUPPLY VOLTAGE	90 to 550V AC, 50/60Hz		85 to 270V AC, 50/60Hz

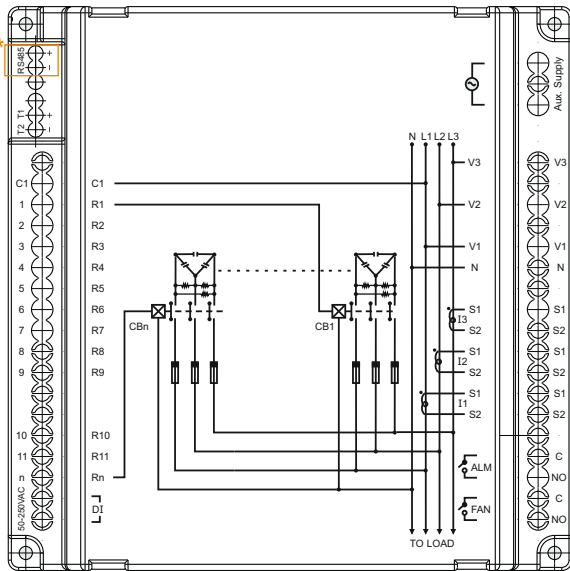
Ordering Information

PRODUCT CODE	SUPPLY VOLTAGE	OUTPUT		CERTIFICATION
		STEPS	COMM. (RS485)	
APFC148-312-90/550V-CE-RoHS	90 to 550V AC, 50 / 60Hz	12	■	CE RoHS
APFC148-308-90/550V-CE-RoHS	90 to 550V AC, 50 / 60Hz	8	---	CE RoHS
APFC147-112-90/550V-CE-RoHS	90 to 550V AC, 50 / 60Hz	12	---	CE RoHS in process
APFC147-108-90/550V-CE-RoHS	90 to 550V AC, 50 / 60Hz	8	---	CE RoHS in process
APFC347-108-230V-CE-RoHS	85 to 270V AC, 50 / 60Hz	8	---	CE RoHS in process

Terminal Connections

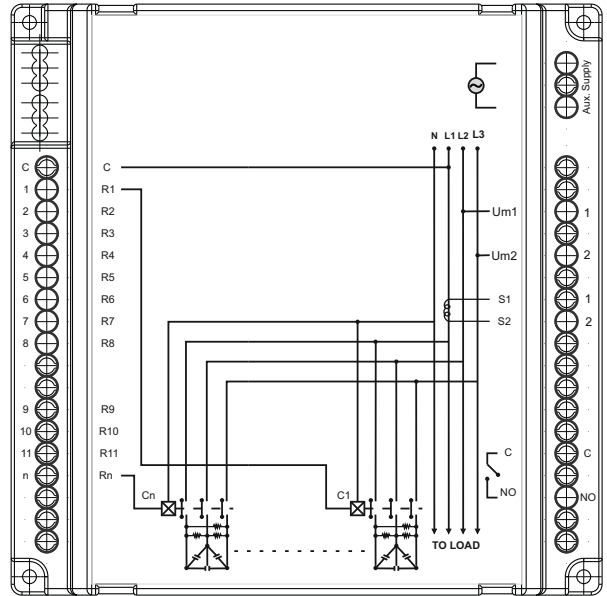
APFC148 : With 3 CT sensing

Where n - 12 For 12 stage variant.
8 For 8 stage variant.
* Valid Only For 12 stage variant.



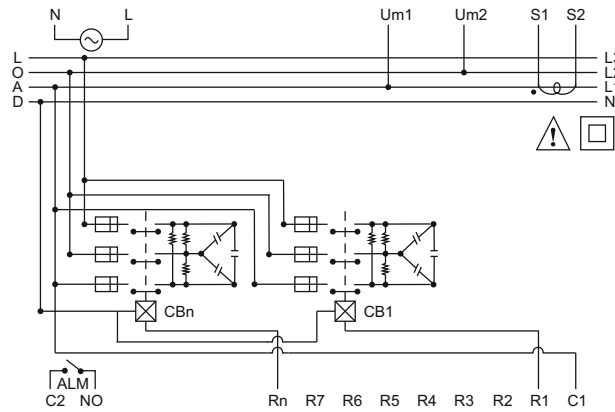
APFC147: With 1 CT sensing

Where n - 12 For 12 stage variant.
8 For 8 stage variant.



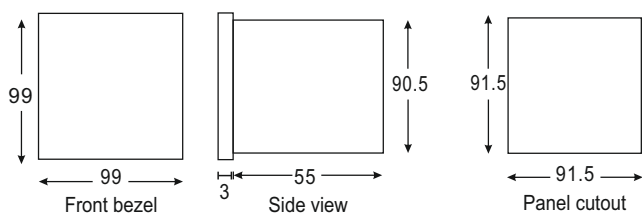
APFC347: With 1 CT sensing

Where n - 8 For 8 stage variant.



Dimensions (All are in mm)

APFC347



APFC148 & APFC147

